



BIBA Package

BIBA Conference 19th/20th May 2010 ExCel Centre London "Professionalism in a Changing World".

BIBA is a prestigious event that is a significant investment in time and resources, but have you considered how you will maximise the return on this investment?

To make sure that you have every opportunity to get the best results from BIBA, Concise Public Relations and Lamb Creative Marketing have combined our resources to offer you the chance to work with two conference award winning companies and make BIBA 2010 experience a success.

Concise Public Relations

Concise has a wealth of experience in the insurance sector. It focuses on delivering measurable results without wasting time or money.

The company has a long history of supporting clients at the BIBA conference: an event that provides the perfect platform to drive out clients' key messages.

www.concisepr.com

Lamb Creative Marketing

A full service agency that works directly in the insurance industry.

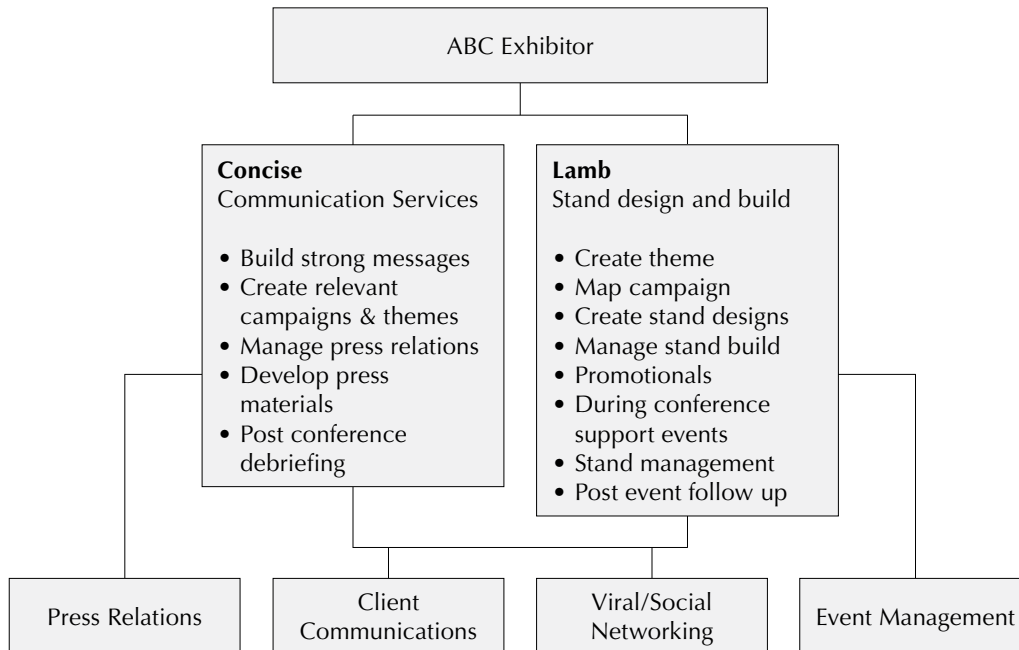
Concentrating upon medium-sized exhibitors their work at BIBA is recognised as getting to the heart of the exhibitors conference aims.

Recognised in 2008 when they won the award for Best Stand Design – Small Space Only, Davies Adjusters.

www.lambinthecity.com



The plan in a nutshell



As the chart shows Concise will manage the communication campaign and Lamb directly the stand build, with both companies collaborating upon the networking and client elements.



The BIBA Offer

- Consultation to fully understand your conference aims
- Creation of your Conference Campaign Plan
- Full design of your stand
- Full management of all aspects of your conference event
- Full build management
- Procurement of all conference collateral including promotionals
- Conference literature design and artworking
- Onsite management for both days allowing you to concentrate upon your clients and prospects
- At conference events support – parties, dinners etc.
- Customer database management
- Full media campaign development to support your key conference messages
- Full media management at the event
- Pre and post-event client communications
- Using the digital networks and online to get your messages broadcast – setting you aside from the crowd
- After event services and debriefing

What Next?

Contact us now to hear more about what we can do to help you and an outline on what our package will cost.

Make your BIBA investment work for you.